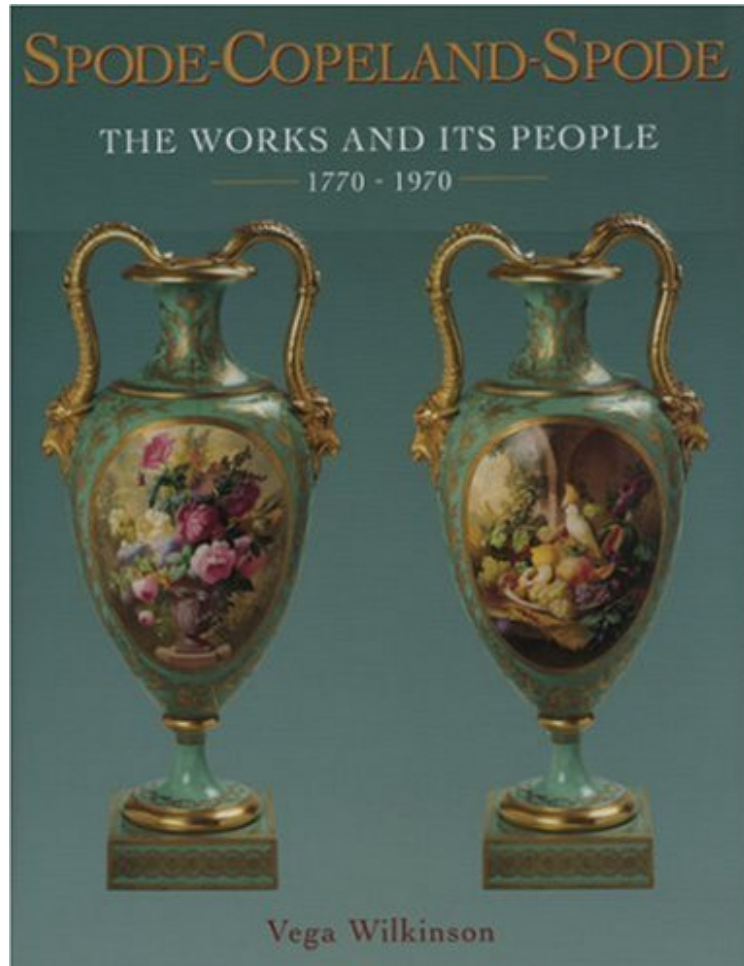


[Mobile ebook] Spode-Copeland-Spode: The Works and Its People 1770 - 1970

Spode-Copeland-Spode: The Works and Its People 1770 - 1970

Vega Wilkinson

*ePub | *DOC | audiobook | ebooks | Download PDF*



[Download](#)

[Read Online](#)

#2008913 in Books Antique Collectors Club Dist 2002-10Original language:EnglishPDF # 1 11.16 x 1.21 x 8.77l, 3.60 #File Name: 1851493646280 pages | File size: 45.Mb

Vega Wilkinson : Spode-Copeland-Spode: The Works and Its People 1770 - 1970 before purchasing it in order to gage whether or not it would be worth my time, and all praised Spode-Copeland-Spode: The Works and Its People 1770 - 1970:

0 of 0 people found the following review helpful. BEST book for Spode Copeland porcelain collectors!By Diane C. LytwynSplendid book, full of color illustrations and much information!0 of 0 people found the following review helpful. Five StarsBy Christine SzolkowskiFabulous item. Thank you.0 of 1 people found the following review helpful. Good for a library of collectors.By Kindle CustomerA very well written book with good historical data on the manufacturing of Spode and Copeland china. A must for a collector or appraiser's library.

Spode-Copeland-Spode is the story of a manufactory, two families, generations of artists, gilders, modellers and their products. Begun by Josiah Spode I and continued by his son Josiah II, the business and works passed to the Copeland

family who for five generations continued the traditions of quality and fine potting started by the Spodes. When the business was sold in 1970 its products reverted to the original name Spode. The book contains illustrations showing the range of products, including commissions for Royalty and the nobility not forgetting examples of the everyday wares of two centuries. There is new unpublished information, drawings and plans showing the many changes which have taken place at the Spode works. This is the fascinating story of a Pottery that has survived for over two centuries and today still produces many fine innovative wares.

About the Author Vega Wilkinson is married with two children. She was born in the West Riding of Yorkshire but has lived in the Potteries for the last twenty eight years - the ideal place as a collector to further her love of fine china and especially landscape decoration which led to research in the archives of Spode and the Copeland family at Trelassick Cornwall. She has published articles on Copeland and Minton, Copeland A Shire book; written the guide book to the Copeland China collection at Trelassick Cornwall, and is now preparing a book A Century of Ceramic Artist 1800-1900.